

COMMERCIAL MULTIPORT VALVES

Owners Manual

65 mm Top mount
65 mm Side Mount
80 mm Top Mount
80 mm Side Mount
100 mm Side Mount







WARNING

This equipment must be installed and serviced by a qualified technician. Improper installation can create electrical hazards which could result in property damage, serious injury or death. Improper installation will void the warranty.




Notice to Installer

This manual contains important information about the installation, operation and safe use of this product. Once the product has been installed **this manual must be given to the owner/ operator of this equipment.**

	This is a safety symbol on your system or in this manual, look for one of the following signal words and be alert to the potential for personal injury.
 DANGER	Warns about hazards that will cause death, serious personal injury, or major property damage if ignored.
 WARNING	Warns about hazards that will cause death, serious personal injury, or major property damage if ignored.
 CAUTION	Warns about hazards that will or can cause minor personal injury or property damage if ignored.
NOTICE :	Indicates special instructions not related to hazards.

Carefully read and follow all safety instructions in this manual and on equipment.

Keep safety labels in good condition; replace if missing or damaged.

 WARNING Hazardous pressure	<p>Incorrectly installed or tested equipment may fail, causing severe injury or property damage.</p> <p>Read and follow instructions in owner's manual when installing and operating equipment. Have a trained professional perform all pressure tests.</p>
---	--

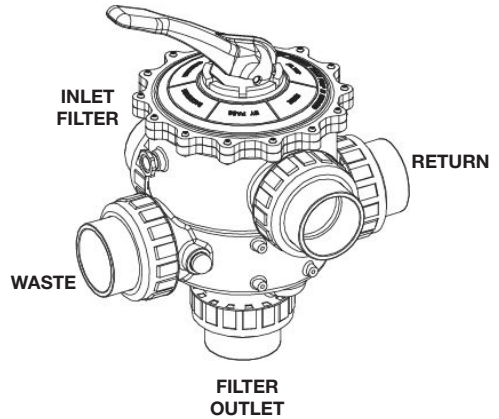
1. Do not connect system to a high pressure or city water system.
2. Trapped air in system can cause explosion. **BE SURE** all air is out of system before operating or testing equipment.

Before pressure testing, make the following safety checks:

- Check all clamps, bolts, lids, and system accessories before testing.
- Release all air in system before testing.
- Water pressure for test must be less than 25 PSI (172 kPa).
- Water Temperature for test must be less than 100° F. (38° C).
- Limit test to 24 hours. After test, visually check system to be sure it is ready for operation. Remove trap lid and retighten hand tight only.

Features

- One-piece body made from moulded glass-reinforced engineering plastic provides incredible strength and durability.
- 304 – Grade Stainless Steel used throughout to withstand harsh water conditions.
- Multiple valve positions available with the turn of a handle, including: Filter, rinse, bypass, backwash, winterise, waste
- Supplied with pressure gauge and fitted with ¼ inch BSP air release valve.
- Sight glass fitted to waste line for easy inspection of the backwash water.
- Designed for a 400 kPa (58 psi) operating pressure.



Connecting Multi-Port Valve to Filter System

Use care before assembly not to damage union sealing surfaces or O-Ring. Install union O-Rings in groove; tighten union collar hand tight.

FOR SLIP FITTINGS: Use correct solvent/cement when fitting piping or adapters to slide valve. The valve body is ABS plastic, thus any good quality ABS to PVC solvent can be used. Use primer on PVC components only. Allow a minimum of four hours drying time prior to pressure testing or operation.

To avoid serious personal injury or property damage, follow cement manufacturer's instructions exactly.




Multiport Valves and Waterco Filter Models

Part Number	Valve Model	Filter Models	Connections
2280600	TM 65 mm MPV	S1050 S1200	65 mm
22905010	SM 65 mm MPV	SM1200 SMD1050 SMDD 900 -1050	65 mm
228800	TM 80 mm MPV	S1200	80 mm
2290820	SM 80 mm MPV	SM1200 - 1400 SMD 1050 -1400 SMMD 900 -1400 SPPD 1050 -1200	80 mm
2291005	SM 100 mm MPV	SMD 1200 -1800 SMDD 1200 -1800 SPDD 1400 -1600	100 mm

• **TM = Top Mount**

• **SM = Side Mount**


FUNCTIONS OF THE MULTI-PORT VALVE

<div><div> WARNING</div><div>Hazardous pressure</div></div>	<p>Hazardous pressure. Can cause severe injury or major property damage from valve blow up.</p> <p>Release all pressure and read instructions before working on system.</p>
<div></div>	<p>To avoid severe injury and major property damage, stop pump before changing handle positions.</p>
<div></div>	<p>To avoid major property damage due to flooding, make sure pointer is accurately positioned and down all the way before restarting pump.</p>

Press down on handle to release pressure before turning.

1. FILTER – Normal position during operation of system.
2. BACKWASH – Position when operating system to purge filter of accumulated debris. This normally is necessary when filter pressure gauge reads 10 PSI higher than starting pressure on a clean filter. Consult your filter operating instructions.
3. RINSE – This position is only used with sand filters and is designed to flush stray sand from system before returning to filter operation after backwashing. Consult your filter operating instructions.
4. WINTERISE – Allows drain and winterise filter and pump according to manufacturer’s instructions.
5. BY-PASS – This position permits pump to continue recirculating water (chemicals, heat, etc.) without flow through filter. This is advantageous when filter or its components are being repaired or replaced.
6. WASTE – This position permits draining or lowering of pool water level. When pump is stopped with valve in this position, quickly move handle to another position to avoid air getting into piping.

VALVE MAINTENANCE

<div></div>	<p>To avoid severe personal injury and major property damage, stop pump and release all pressure from system before servicing valve.</p>
--	---

No regular maintenance is required for proper operation of multi-port valve.

Winterizing For Freezing Climates:

Place valve handle in winterise position.

PART REPLACEMENT

To prevent flooding, make sure that system is drained or isolation valves are closed before opening multi-port valve.

Replacing Handle:

1. Place handle in "FILTER" position.
2. Remove handle pin from handle; remove handle and replace with new one, making sure pointer is in "FILTER" position.
3. Replace pin by tapping lightly into place with hammer.

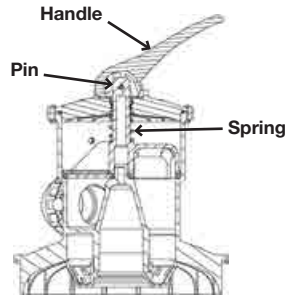


Figure 1

Replacing Cover and Rotor Assembly (as a unit):

1. STOP PUMP and release all pressure from system.
2. Remove all bolts and nuts around perimeter of cover.
3. Remove assembly by lifting straight up.
4. Align cover pin (see Figure 2) and install new cover and plug. Press down on cover to allow bolts to engage nuts; tighten each bolt securely.

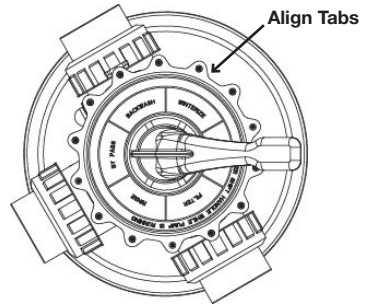


Figure 2

Replacing Internal Valve Parts:

1. STOP PUMP and release all pressure from system.
2. Place handle in "FILTER" position.
3. Remove all the bolts and nuts in order to replace any internal parts.
4. Remove cover by lifting straight up.
5. Remove handle pin and handle (See procedure "Replacing Handle" above)
6. Remove washer.
7. While disassembled, check condition of plug, rubber gasket, spring, O-Ring, and internal plastic washer. If any of these parts appear worn, replace them.
8. Reassemble plug, cover, and handle by compressing spring (See Figures 1 and 2) and reversing procedure "Replacing Cover and Rotor Assembly" above.
9. Before reinstalling cover, be sure plug and handle are in same position as when cover was removed.
10. Tighten each bolt securely.

Spider Gasket Replacement:

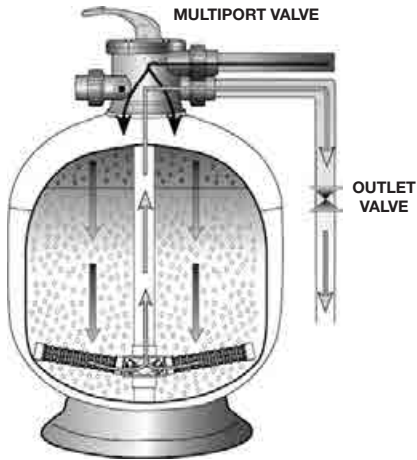
NOTICE: Read instructions completely before starting.

1. STOP PUMP and release all pressure from system.
2. Remove the bolts and nuts holding the cover to the valve body. Remove the cover assembly.
3. Remove the old gasket from the valve rotor.
4. Make sure that the gasket groove is free of water, grease, oils, debris and parts of the old gasket. Use alcohol to degrease.
5. NOTICE: Once this step is started, continue through Step 9 without interruption. Apply glue sparingly (a bead about 1/16" wide) to the bottom only (not the sides) of the spider groove in the valve body. The glue lines must be continuous and intersect at the intersections of the grooves.
6. Insert the new gasket into the groove with the rounded bead up. Press the gasket firmly into all groove areas to seat the new gasket evenly.
7. Align the tab on the cover assembly with the pin on the valve body (See Figure 2) and insert the cover assembly into the body, fastening it with the bolts and nuts removed in Step 2. Tighten all bolts securely.
8. Depress the valve handle and rotate it to the closest standard position (FILTER or RINSE), being careful not to rub the plug on the new gasket. Release the handle, allowing the plug to hold the gasket in place while curing.
9. Minimum cure time is 2 hours. Curing for 24 hours is recommended for full strength

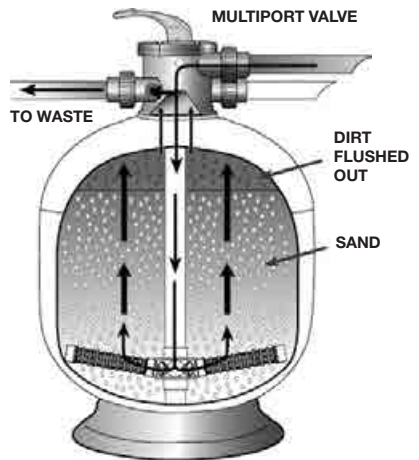
Valve Position Functions

Valve Setting	Flow direction through valve
FILTER	PUMP — TOP — THROUGH FILTER — BOTTOM — RETURN For normal filtration through filter.
BACKWASH	PUMP — BOTTOM — THROUGH FILTER — TOP — WASTE For reversing flow for cleaning filter.
RINSE	PUMP — TOP — THROUGH FILTER — BOTTOM — WASTE For initial start-up cleaning plus resetting filter bed after backwashing.
WASTE	PUMP — WASTE For draining water.
WINTERISE	NO CIRCULATION PAST PUMP PORT For shutting off all flow to filter.
BY PASS	Air fittings.

Top Mount Configuration

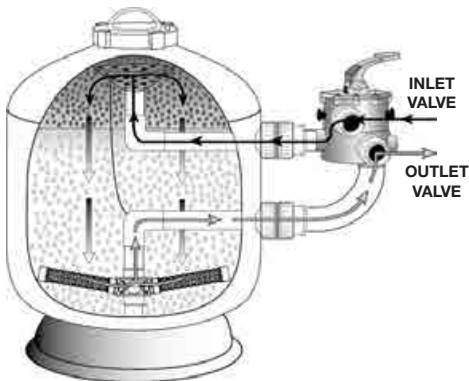


Filter Mode

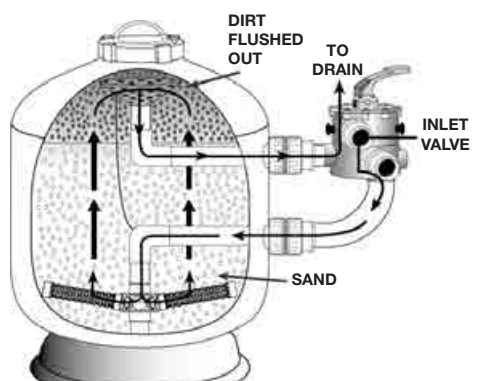


Backwash Mode

Side Mount Configuration



Filter Mode

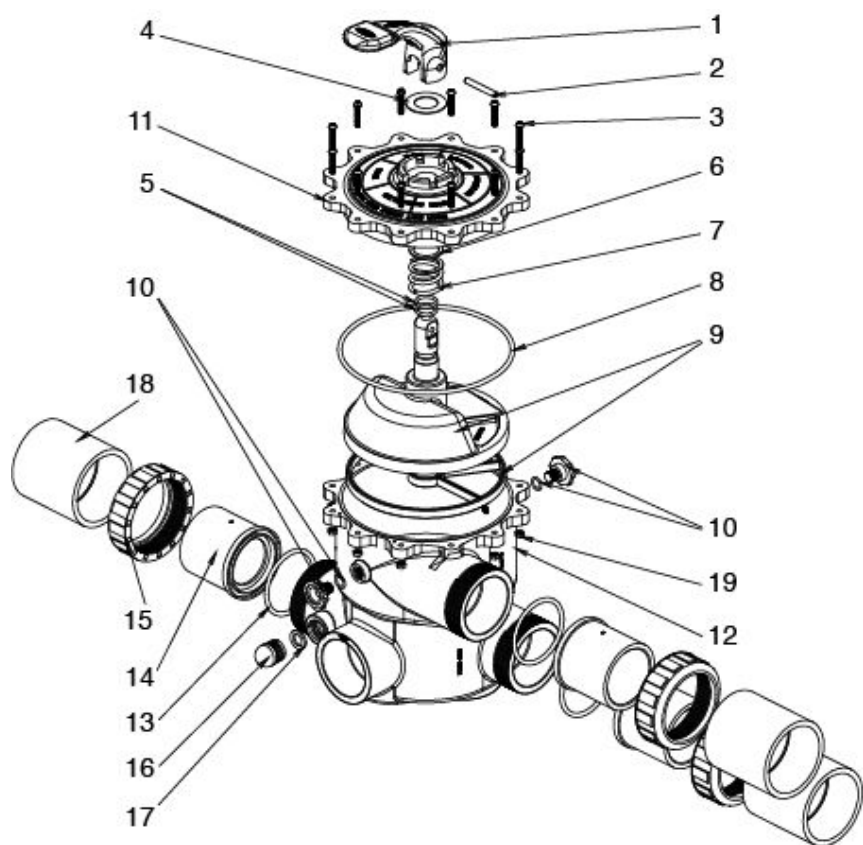


Backwash Mode

Warranty is stated in a separate document

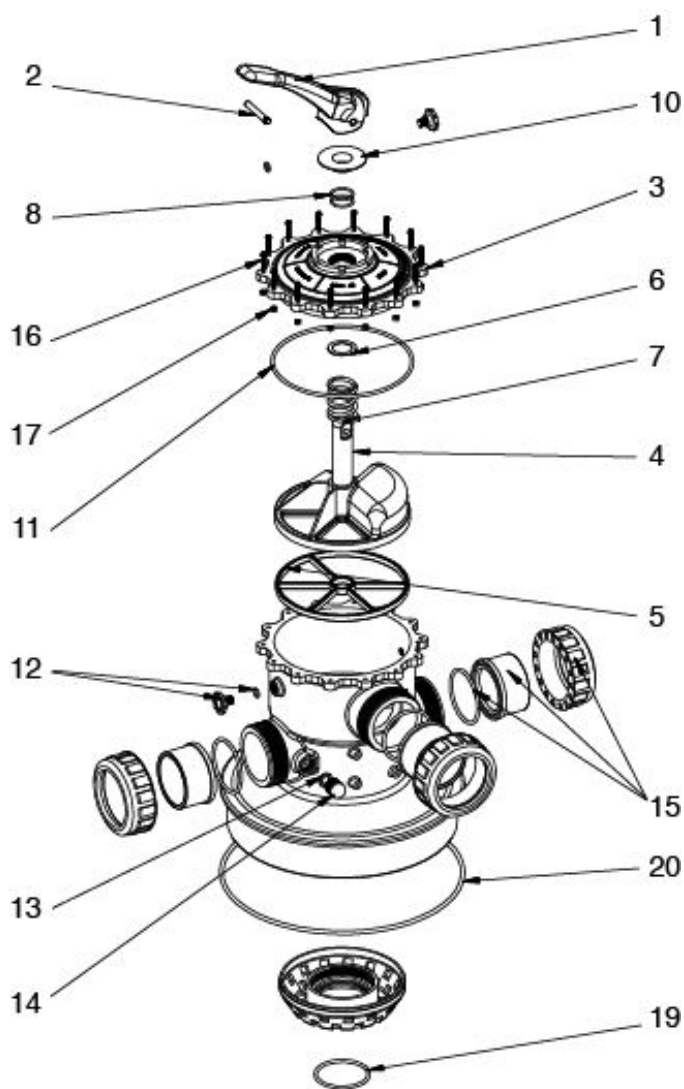
Multiport Valve 65 mm (Side Mount) Assembly

Item	Qty	Part Number	Name
1	1	621451	HANDLE
2	1	621111	HANDLE PIN
3	12	W12109	SCREW
4	1	W02627	TEFLON WASHER
5	2	621201	AXIAL O’RING
6	1	W02628	TEFLON WASHER
7	1	621182	SPRING
8	1	621152	LID O’RING
9	1	621233	ROTOR WITH GASKET
	1	621234	ROTOR
	1	621235	SPIDER GASKET
10	2	620221	AIR RELIEF WITH O’RING
11	1	6211302	LIF
12	1	6213021	BODY
13	3	63406554	O’RING
14	3	644490	B/U PLAIN END
15	3	63406551BLK	B/U LOCK NUT
16	1	621381	SIGHT GLASS
17	1	621341	SIGHT GLASS GASKET
18	3	112780	COUPLING 80 mm
19	12	W02624	NUT



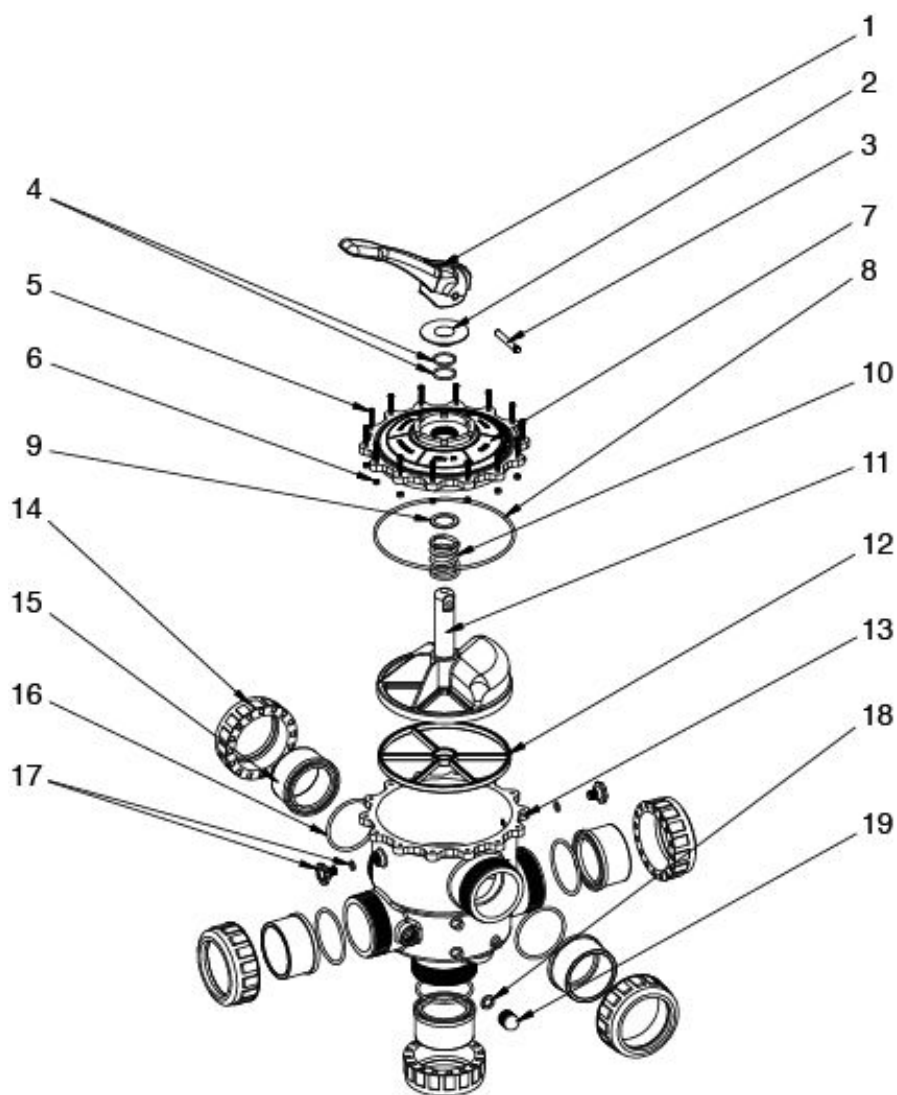
Multiport Valve 80 mm (Top Mount) Assembly

Item	Qty	Part Number	Name
1	1	621100	HANDLE
2	1	6211020	HANDLE PIN
3	1	6211310	LID
4	1	621243	ROTOR
5	1	621272	SPIDER GASKET
6	1	6211060	TEFLON WASHER
7	1	621192	SPRING
8	2	621202	O’RING AXLE
9	1	621192	BODY (T/MOUNT)
10	1	621193	SLEVE
11	1	621142	O’RING LID
12	2	620221	AIR RELIEF VALVE
13	1	621341	SIGHT GLASS GASKET
14	1	621381	SIGHT GLASS
15	3	W02255BLK	B/U P/END 80 mm
	3	W02253BLK	B/U LOCK NUT 80 mm
	3	W02249	O’RING B/U 80 mm
16	14	W12109	BOLT M6x32
17	14	W02624	NUT M6
18	1	621013	DIFFUSER
19	1	621194	DIFFUSER O’RING
20	1	W02742	O’RING 9 mm



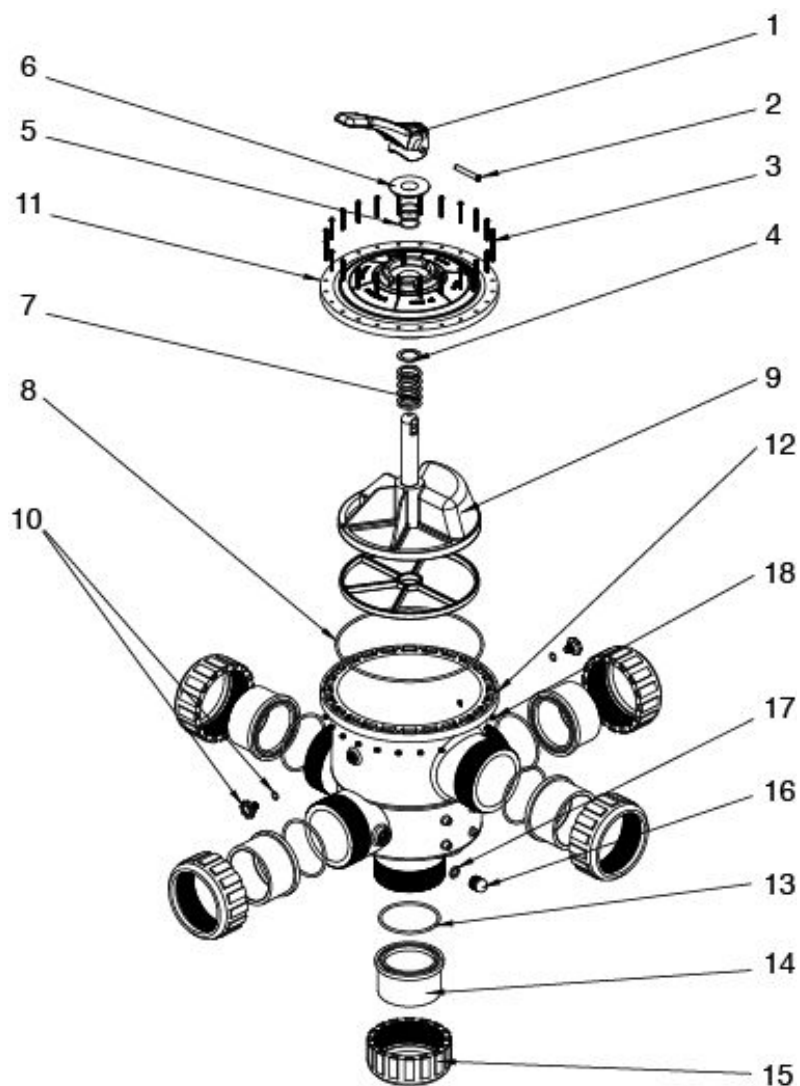
Multiport Valve 80 mm (Side Mount) Assembly

Item	Qty	Part Number	Name
1	1	621100	HANDLE
2	1	621193	SLEEVE
3	1	6211020	HANDLE PIN
4	2	621202	O’RING AXLE
5	14	W12109	SCREW
6	14	W02624	NUT
7	1	6211310	LID
8	1	621142	O’RING LID
9	1	6211060	WASHER
10	1	621192	SPRING
11	1	621243	ROTOR
12	1	621272	SPRIDER GASKET
13	1	621293	BODY
14	5	W02253BLK	LOCK NUT B/U 80
15	5	W02255BLK	PLAIN END B/U 80
	5	W02255EBLK	PLAIN END B/U 90
16	5	W02249	O’RING B/U 80
17	5	620221	AIR RELIEF VALVE
18	1	621341	GASKET SIGHT GLASS
19	1	621381	SIGHT GLASS



Multiport Valve 100 mm Assembly

Item	Qty	Part Number	Name
1	1	621100	HANDLE
2	1	6211020	HANDLE PIN
3	24	W12781	SCREW
	24	W12783	WASHER SPRING
	48	W12782	WASHER FLAT
4	1	6211060	WASHER
5	1	621202	AXIAL O’RING
6	1	621193	SLEVE
7	1	62110150	SPRNG
8	1	62110110	LID O’RING
9	1	62110220	ROTOR
	1	62110130	SPIDER GASKET
10	2	620221	AIR RELIEF VALVE
11	1	6211028	LID
12	1	6211029	BODY
13	5	W02553	O’RING
14	5	12221011	B/U PLAIN END
15	5	1221009	B/U LOCK NUT
16	1	621381	SIGHT GLASS
17	1	621341	SIGHT GLASS GASKET
18	24	W02624	NUT



OFFICES - AUSTRALIA

NSW - SYDNEY
(HEAD OFFICE)

Tel: +61 2 9898 8600

QLD - BRISBANE

Tel: +61 7 3299 9900

VIC/TAS - MELBOURNE

Tel: +61 3 9764 1211

WA - PERTH

Tel: +61 8 9273 1900

SA/NT - ADELAIDE

Tel: +61 8 8244 6000

ACT DISTRIBUTION

Tel: +61 2 6280 6476

OFFICES - OVERSEAS

WATERCO (EUROPE) LIMITED

Sittingbourne, Kent, UK

Tel: +44 (0) 1795 521 733

WATERCO FRANCE

Saint Priest, France

Tel: +33 4 72 79 33 30

WATERCO (USA) INC

Augusta, Georgia, USA

Tel: +1 706 793 7291

WATERCO CANADA

Longueuil, Quebec, Canada

Tel: +1 450 748 1421

WATERCO (NZ) LIMITED

Auckland, New Zealand

Tel: +64 9 525 7570

WATERCO © LIMITED

Guangzhou, China

Tel: +86 20 3222 2180

WATERCO (FAR EAST) SDN BHD

Selangor, Malaysia

Tel: +60 3 6145 6000

PT WATERCO INDONESIA

Jakarta, Indonesia

Tel: +62 21 4585 1481

WATERCO SINGAPORE INTL PTE LTD

Nehsons Building, Singapore

Tel: +65 6344 2378

WATERCO

Waterco Limited ABN 62 002 070 733

